

An aerial photograph of a city, likely Denver, showing a dense urban grid. A large, roughly rectangular area in the center is highlighted with a semi-transparent green overlay. This highlighted area contains a mix of residential and commercial buildings, streets, and some open spaces. To the left of the highlighted area, there are several large, dark, irregular shapes that appear to be parks or reservoirs. In the upper right, a cluster of taller buildings indicates a downtown or central business district. The overall scene is a high-angle, wide-area view of an urban environment.

2018 **Southwood**
Community
Vision



COMMUNITY VISION

The Community Vision was created by volunteers living in Southwood, with the help of the Federation of Calgary Communities. With this document, we hope to provide the City of Calgary, developers, and Southwood community members with insight as to what we believe Southwood loves about our community, and where change needs to be made. This Vision is broken into three categories: Built Form, Movement, and Public Realm.

With this document, we hope to provide the City of Calgary, developers, and community members with insight as to what we believe, the residents, love about Southwood and where change needs to be made.

We provided many different avenues to provide feedback for the Vision:

Online Survey

The survey was posted for 6 weeks during the first quarter of 2018. It consisted of 11 questions and a total of 43 participants responded

Public Workshops

Two workshops were held in the second quarter of 2018. Using the survey information, the 3 topics that came up consistently were further discussed. A total of 17 participants joined us.

Survey

A short survey was distributed during the annual Rhubarb Festival. It consisted of 4 questions and 30 participants responded.

Advertisements for the Community Vision were placed through the following mediums:

- Southwood Connects Newsletter (December 2017, January-July 2018)
- Southwood Connects Website (www.southwoodconnects.ca)
- Sandwich boards located along Elbow Drive and community streets
- Emails were sent through the community's membership list
- Social media sites - Facebook and Twitter

The Vision will be re-examined every 5 years in order to update any information or constraints that have changed. In 2029, the Vision will require a full update, involving a new public engagement program to ensure the ideas and thoughts of those residing in the community are captured.



Why do people call Southwood home?

- Affordability for both renters and buyers
- Central location with convenient access to major commuter routes
- Preservation of its mid-century qualities
- Mature landscaping
- Proximity to public recreational facilities

What's Currently in Southwood?

- Community area: 2.7 km²
- 6,214 people live in Southwood (2017 City of Calgary Census)
- Southwood's peak population was in 1978 - 8,101 people

SOUTHWOOD

Established in the 1960s, Southwood is located in the southwest quadrant of the City of Calgary in Ward 11. It is bordered by Macleod Trail to the east, Springwood Drive to the north, 14th Street SW to the west, and Anderson Road to the south. Southland Drive bisects the community towards the north boundary and Elbow Drive bisects the community north-south in the centre. Southwood also has two LRT stations and multiple bus routes to allow its residents and those in surrounding communities with ample opportunities to move around Calgary.

Southwood is served by a number of commercial, institutional, and City of Calgary developments allowing residents to work, live, and play within their community. Many of the commercial opportunities draw residents from neighbouring communities.

City of Calgary

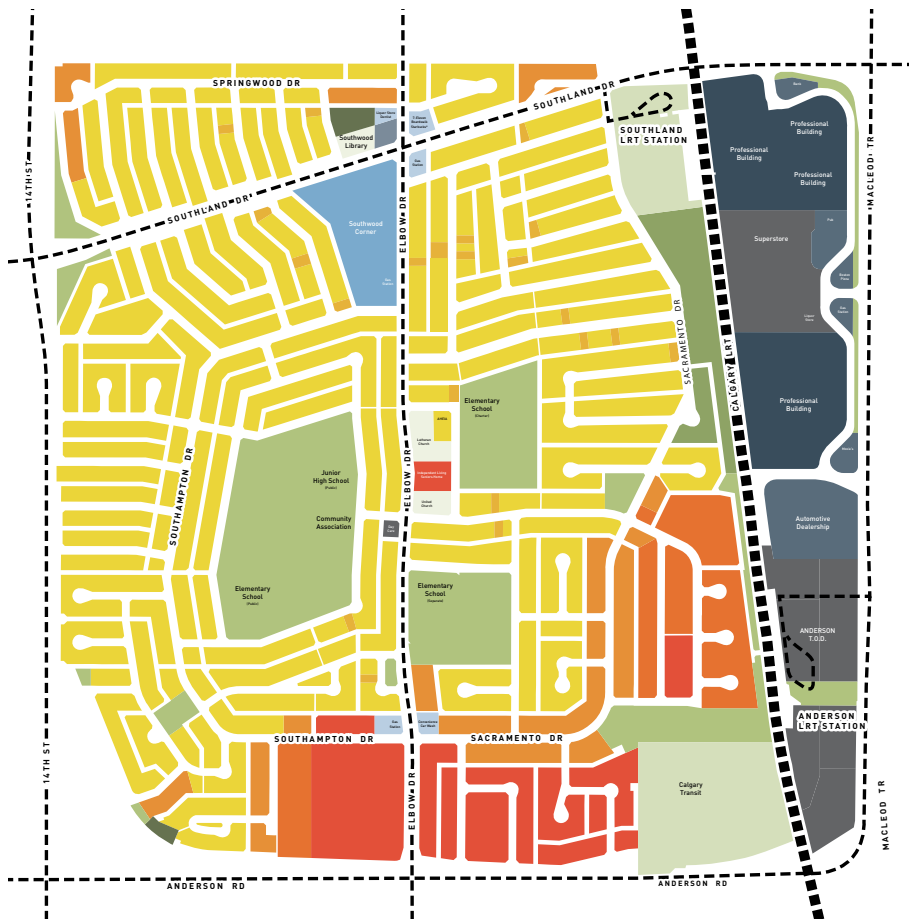
- Southwood Public Library
- Calgary Transit Anderson Garage

Schools

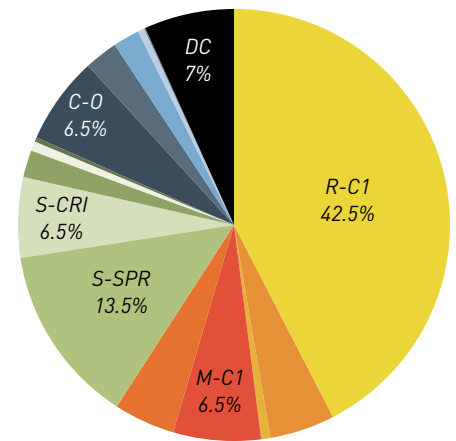
- Ethel M Johnson Public School (Grades K-6)
- Harold Panabaker Public School (Grades 7-9)
- St. Stephen Catholic School (Grades K-9)
- Foundations for the Future Charter Academy (K-4)

Commercial

- Alberta Health Services
- Medical services – dental, dermatological, family practitioners, optometrists, etc
- Grocery stores – Real Canadian Superstore, Planet Organic, Kevin's No Frills, 7-Eleven
- Specialty stores – Fabricland, Imaginary Wars, Plato's Closet, Pet Planet, 5 Star Nails
- Restaurants – Humpty's, Boston Pizza, Moxie's, Tim Horton's, Izumi Sushi, Black Swan Pub
- Many professional offices in the complexes along Southport Ln / Southport Rd



Existing Land Use in Southwood (1p2007), May 2018 - Map & Pie Chart



LEGEND

Direct Control	DC	7%
Commercial	C-N2	0.5%
	C-C2	2%
	C-COR1	0.1%
	C-COR3	2.5%
	C-0	6.5%
Special Purpose	S-SPR	13.5%
	S-CS	0.3%
	S-R	2%
	S-CI	0.7%
	S-CRI	6%
	S-CR1	6%
Low Density Residential	R-C1	42.5%
	R-C1s	0.7%
	R-C2	5%
Multi-Residential	M-CG	4.5%
	M-C1	6.5%

BUILT FORM

The purpose of this category is to establish a framework for the character and types of uses residents would like to see regarding future development.

The community is bordered by several major thoroughfares identified by the City of Calgary. With the approval of the Anderson Area Redevelopment Plan in 2018, redevelopment in the eastern portion of Southwood is coming which will provide more diverse housing and developments in the future.

Southwood believes that the redevelopment of the Anderson LRT Station area will spark interest for further redevelopment along Macleod Trail, north to the Southland LRT station. Residents would want to ensure that any new development along Macleod Trail offers strong pedestrian connections to the existing residential area to the west.

What's Currently in Southwood?

- In 2018, the City of Calgary approved two major land use redesignation applications: the Anderson Redevelopment Area Plan and the former gas station site at 9939 Elbow Dr SW.
- New rules for Secondary Suites allow secondary suites as a discretionary use in R-1, R-C1, and R-C1L.

What Kind of Housing is in Southwood?

- 1,376 Single Family Homes (52%)
- 288 Duplexes (11%)
- 334 Apartments (13%)
- 520 Townhomes (19%)
- 116 Converted Structures (4%)
- 1448 (54%) Owner-Occupied Dwellings
- 8 Registered Secondary Suites

-2017 Census, City of Calgary



ORIGINAL MID-CENTURY SINGLE FAMILY HOUSE, Southwood



ORIGINAL MID-CENTURY SINGLE FAMILY HOUSE, Southwood



ORIGINAL LOW-RISE APARTMENTS, Southwood



ORIGINAL DUPLEXES, Southwood



TOWNHOUSES, Southwood



SENIORS APARTMENTS, Southwood

What's Missing in Southwood?

- Townhouses
- Apartments
- 3-Bedroom Units in multi-family
- Accessible Units (ie. elevators, wider hallways, ramps)
- Options for Aging in Place

Existing Residential

Currently, the majority of Southwood's housing stock is mid-century modern in character. Ideally, these qualities would be maintained if the property is renovated or redeveloped. Residents are concerned with the potential for profit-driven infills depreciating the overall character and affordability of the neighbourhood.



RENOVATED MID-CENTURY SFH, South Calgary



CONTEXTUALLY-DESIGNED HOME, Brentwood



LOW-RISE APARTMENTS, Marda Loop



TOWNHOUSES, Bowness



TOWNHOUSES, Bridgeland



MID-RISE APARTMENTS, Kensington

Encouraged Residential

Residents would like to maintain the low density housing stock to the west of Elbow Drive and see an increase in density moving closer to the LRT stations and along Macleod Trail. Added density is encouraged around the commercial sites at the Elbow Drive & Southland Drive intersection as those sites are either considered Transit Oriented Development or are in close proximity to the transit options Southwood has to offer.

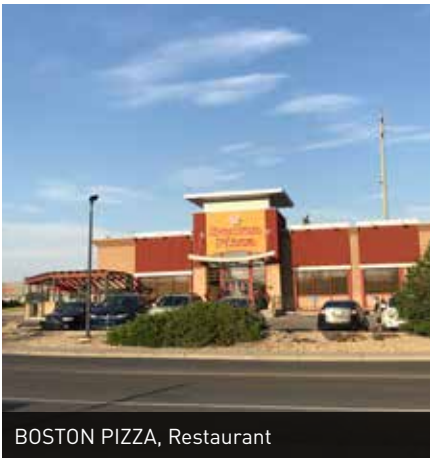
Any large housing developments looking to come to Southwood are welcome and developers are encouraged to work with the community to ensure the redevelopment fits and functions properly with the existing area. New development should focus on affordable, high-quality, and contextually-designed townhouses, low-rise apartments, and senior's housing.



SOUTHWOOD CORNER, Low-Density Commercial



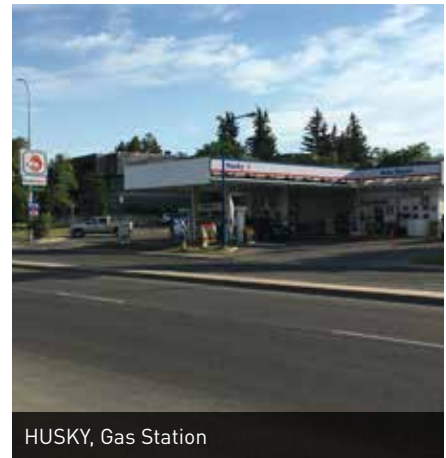
SOUTHPORT PROFESSIONAL BUILDING



BOSTON PIZZA, Restaurant



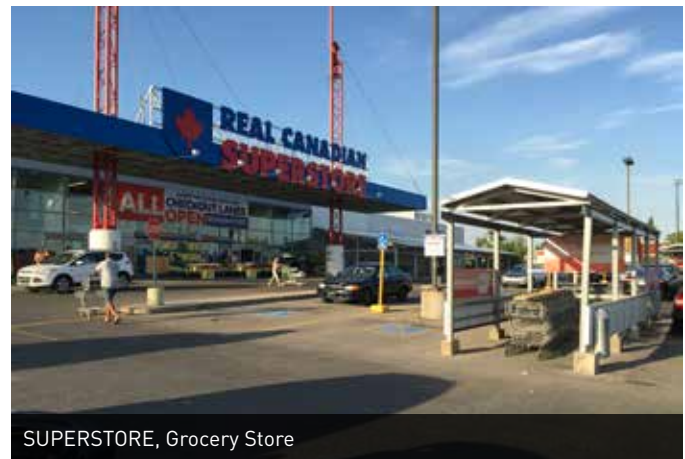
CAREWEST + AHS, Office Buildings



HUSKY, Gas Station



Southland Park I+II, Office Buildings



SUPERSTORE, Grocery Store

What's Currently in Southwood?

- *As of July 2018, there are 72 different business licenses held in Southwood [Open Calgary, data. calgary.ca]*

Existing Commercial

Southwood has a strong commercial presence along Macleod Trail and at the Elbow Drive & Southland Drive intersection. Of all the commercial stock throughout the community, Southwood currently does not have any mixed-use type developments. Most of the commercial stock located along Macleod Trail are centered around the 9 to 5 lifestyle, while those along Elbow Drive, are businesses geared to those residing in the neighbourhood. Residents understand that a mixture of residential and commercial spaces are required to have a flourishing community.



BRITANNIA BLOCK, Mixed Commercial, Britannia



CLEAVER, Restaurant, Connaught



MADE BY MARCUS, Specialty Food, West Hillhurst



LEGION #264, Kensington



4th STREET, Active Street Frontage, Mission



PLANT, Specialty Retail, Inglewood

Encouraged Commercial & Mixed-Use

Residents have expressed a desire for low to medium (up to 5 storeys) mixed-use development. Emphasis was made on providing a variety of commercial uses to support retail, restaurant, office, and personal services, and to nurture the growth of locally-owned businesses. The ideal development would generate liveliness throughout the day and evening, feature active street frontage, and focus on accessibility using all methods of transportation (ie. walking/biking/transit/vehicle). Developers are encouraged to locate larger commercial developments at either of the two LRT stations or along Macleod Trail.

What's Missing in Southwood?

- Restaurants with Patios
- Specialty Foods
- Boutique Retail
- Mixed Use
- Places to go after 7pm
- Storefronts along a continuous block face



LRT + Cycling



Bus Stop, Elbow Dr



Walking to School, Southwood

MOVEMENT

Movement looks at how people get from A to B. The community has direct access to Anderson Road which connect users to the Queen Elizabeth II Highway and to the Trans Canada Highway via 14th Street and Crowchild Trail. Convenient and reliable access to all modes of transportation — walking, cycling, driving, and public transit — is a priority to Southwood’s residents. This adds value to the neighbourhood and increases the viability of the commercial districts by connecting businesses to commuters and residents to schools & recreational facilities. There are barriers to moving about the neighbourhood caused by Southland Drive, Elbow Drive, the LRT line, the curvilinear street pattern, and steep grades.

Being home to two LRT stations offers commuters access to the City of Calgary downtown core as well as the NW and NE quadrants. In fact, many of the newer residents moving to Southwood chose this community due to its proximity to the LRT stations.

Calgarians tend to use the transit mostly during the week, Southwood residents also follow in this trend. The pedestrian realm in Southwood is present, but lacking modern conveniences that make it universal to all users. Sidewalks have mid-century qualities such as being narrow, sloped towards the road, and lacking curb cuts. Many residents have accepted this, but if we are a community that wants to progress and allow residents to age in place, improvements are required to this realm to motivate residents to walk more often.

Cyclists experience challenges accessing direct routes through the community. The City of Calgary has provided a couple of cycling routes, but they are located towards the south and east of the community. Cyclists from the northern sections of the community do not have proper routes and are forced onto sidewalks as to not risk their safety on the main routes.

1 Southland Drive Crosswalk

This is the only pedestrian-only crosswalk along Southland Drive in Southwood. Located at the top of the hill, there is a bus stop, a lighted crosswalk, and a median dividing the traffic lanes. Residents have expressed safety concerns with the drivers not seeing the crosswalk lights flashing, causing near misses with vehicles.

2 Springwood Drive & Elbow Drive

Due to the close proximity to Southland Drive, all of the residents living in this northwest portion of Southwood experience challenges accessing Elbow Drive. Many commuters ignore the traffic laws and make it extremely difficult for residents, especially since this is their only access point into this area.

3 Elbow Drive & Southland Drive

This intersection poses many risks to pedestrians. The sidewalks are uneven, narrow, and sloped; the curb cuts/aprons are not large enough for more than two people to stand on. People with limited mobility have difficulties navigating the turns as they have to start their turn while still in the crosswalk. The right hand turn lanes have a wide sweep (radius) and could be sharpened to reduce vehicle turning speed and encourage drivers to turn more carefully. Crosswalk signalling buttons are too high off the ground for users to operate.

4 Southland Bridge

This bridge provides LRT users access to the commercial areas along Macleod Trail and many residents in the surrounding eastern communities access to the Southland LRT station. The sidewalk is extremely narrow and would pose many risks should two persons in wheelchairs cross paths. The concrete barriers protect pedestrians from the traffic and the rail lines, but there is open areas where pedestrians could easily roll off the sidewalk into the parking lot below. There are safety concerns under the bridge, most being drug paraphernalia that has been spotted in the area.

5 Southamptom Drive & Elbow Drive

This crosswalk poses more challenges for pedestrians looking to cross Elbow Drive. Many of the residents in this pocket of Southwood use this crosswalk to access the Southland LRT station and the Route 37 bus. The lines are seldom painted and the pedestrian crossing signs are covered. Most commuters do not stop at this crosswalk when a pedestrian is present.

6 Anderson Pedestrian Bridge

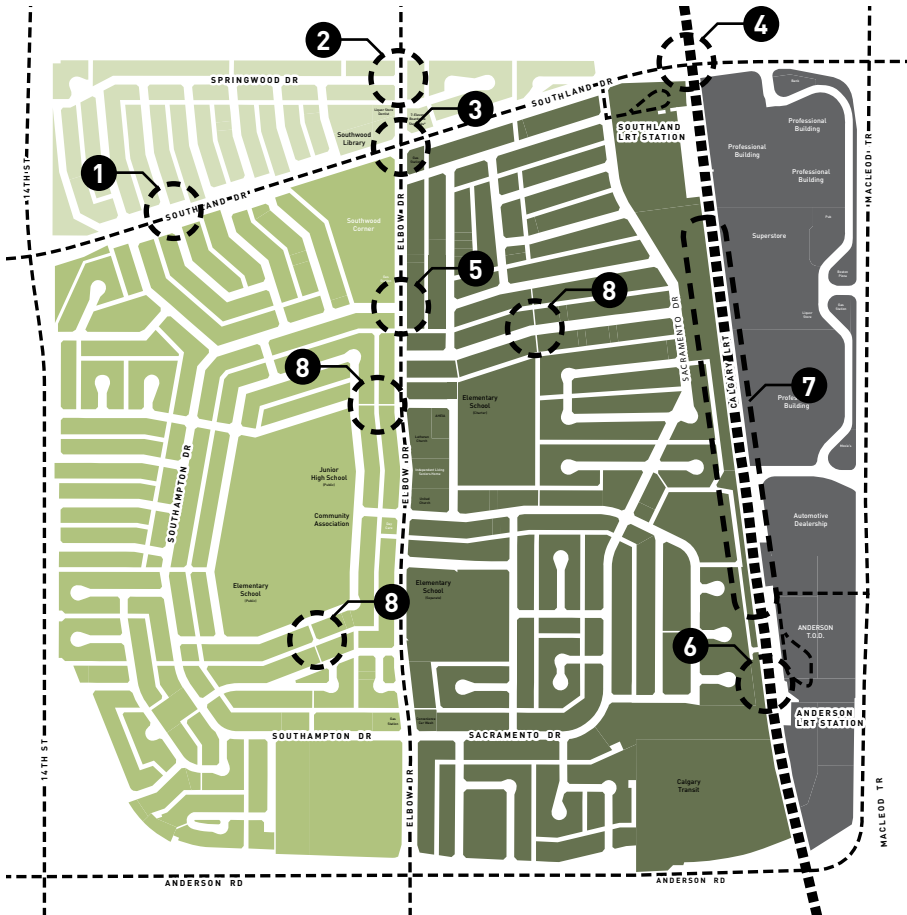
The pedestrian bridge into the Anderson LRT station is the only option for users in the south of Southwood to cross the rail lines. The biggest issue is it's very narrow and there are a lot of switchbacks with steep grades.

7 Lack of Bridges over Rail Lines

There are only two vehicular and three pedestrian bridges crossing the LRT and CP rail lines. The vehicular bridges are approximately 1.6km, while the distance between the pedestrian bridges at either of the LRT stations is 1km.

8 Cut-through Alleys

There are a number of cut through alleys scattered throughout the community. They offer pedestrians opportunities to get through the community quickly, but they are poorly maintained and unsafe for all users. There is confusion as to who is responsible for maintaining these pathways.



SOUTHWOOD, Major Roads + LRT Divide Neighbourhood

LEGEND

- LRT Route
- Bus Route
- North Southwood
- West Southwood
- Central Southwood
- East Southwood



4 Southland Bridge



8 Cut-through Alleys



3 Crosswalk Elbow Dr & Southland Dr



Traffic Calming for Pedestrians



Wider Curb Cuts



Upgraded Bus Shelter, Calgary



Wider Sidewalks to Accommodate All Abilities



Shared Bike Route, NW Calgary



Wayfinding Signage



High Quality and Clearly Marked Crossing w/ Accessible Design

What's Missing in Southwood?

- *Curb cuts on all corners*
- *Traffic calming*
- *Convenient access to LRT Stations & Macleod Trail*
- *Safe bicycle routes*
- *Shortcuts for pedestrians*
- *Wider sidewalks*

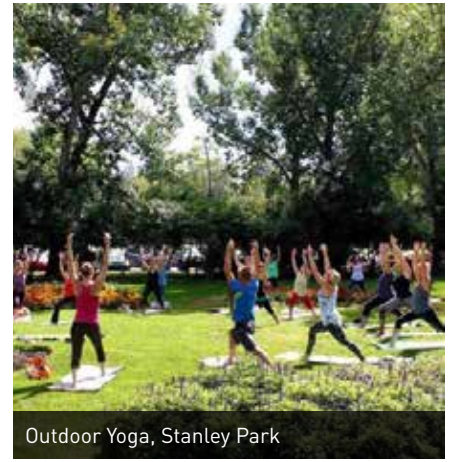
Movement Solutions

We believe the following will improve movement in Southwood:

- Upgrading/creating curb cuts and widening sidewalks for better accessibility for those with reduced mobility or strollers;
- Additional/safer pedestrian crossings, and short cuts through the community;
- Added street lighting and brighter paint at crosswalks;
- Providing wayfinding; and
- Increase number of cycling paths with proper route signage.



General Plaza, Bridgeland



Outdoor Yoga, Stanley Park



Neighbourhood Patio, Mission

PUBLIC REALM

Public Realm refers to the fabric that makes up Southwood’s street-scapes and areas for public gathering . Creating welcoming, vibrant, and functional indoor/outdoor spaces ranked high for participants in our survey. Using good design to facilitate social interaction among neighbours will help strengthen the community and create a character unique to Southwood.

Southwood is a community that boasts a number of great gathering spaces, many of which draw visitors from all over the city.

- City of Calgary skateboard park - this is one of the best skate parks in the city and users will travel from all corners of the city to access the park
- Hockey rink - Thanks to volunteers, this rink is very well used and maintained.
- Baseball diamonds - the community is home to the Rocky Mountain Little League baseball diamond, and many others. These diamonds are in high demand throughout the summer months.
- Dog Park - the off-leash areas that border 14th Street are busy throughout the day.
- Parks/green spaces - these spaces are scattered throughout the community so that homes are never too far from a green space.

What Are Residents Saying?

“In 7 years, we are riding bikes and playing in the field/park with my son on Sacramento Drive or walking to the Southwood Library. Seeing other families in the neighbourhood enjoying the same and feeling safe and happy!”

Resident of Southwood (>30 years)

“In 7 years, I am walking down Elbow with my family to go to a local restaurant near Southland Drive. The sidewalks are wide, well-lit, and vibrant with a lot of neighbours out enjoying the weather.”

Resident of Southwood (0-5 years)

“In 7 years, I picture walking the dog and the kids down to a street festival with music and art. I picture the community connecting amidst more culture and unique amenities” - Resident 0-5 years”

Resident of Southwood (0-5 years)



Walkability Issues at Train Stations



Well-lit Pathway



Street Signage



Lighting for Safety & Activity, Chinook LRT



Pedestrian Safety Concerns

Safety

For the most part, residents consider the community to be safe. When broken down, concerns were expressed as they relate to the following:

- Lack of lighting, lack of police presence, and drug paraphernalia at the LRT stations
- Crosswalks throughout the community are not maintained, do not have proper curb cuts, and the signage is difficult for drivers to see. Many pedestrians ease their way into the traffic in order to protect themselves and make them visible to drivers.
- Cut-through alleys are poorly maintained, many with cracked and/or uneven sidewalks, and lack lighting
- Vehicles not abiding playground zones, especially near areas where children congregate.

What's Missing in Southwood?

- *Monitoring at Southwood Skate-park*
- *Signage to remind motorists that children play in the area*
- *Lighting at LRT Stations, on Local Pathways, and collector roads*

Improvements to lighting, active spaces/buildings, and crime prevention should be first considered through design. Residents saw opportunities to add lighting in the community to create a sense of safety and to encourage people to spend more time outside in the evening. Careful design of new lighting should prevent light pollution.



Existing Large & Mature Trees (Weeping Birch, White Spruce, Balsam Poplar, Flowering Crabapple), Southwood



Native Species (ie. Anemone), East Village



Character Species (ie. Scotch Pine)



Planted Boulevard, Vancouver

Landscaping

Southwood has a mature urban forest featuring many large and unique species. These trees lend a character to the neighbourhood that is an important factor in why people choose to live in Southwood. Maintaining them is of the utmost importance to residents. We would like to see future planted boulevards and plazas focus on native / hardy species. This will reduce maintenance and help keep our green spaces appealing. Landscaping should also extend to include high-quality hard-scapes such as patios, walks, and plazas.

What's Missing in Southwood?

- *Landscaped boulevards*
- *Low maintenance landscapes with hardy / native species*
- *Landscaping around Southwood Skatepark*
- *Seasonal displays*
- *High-quality outdoor public patio*



Southwood Community Hall



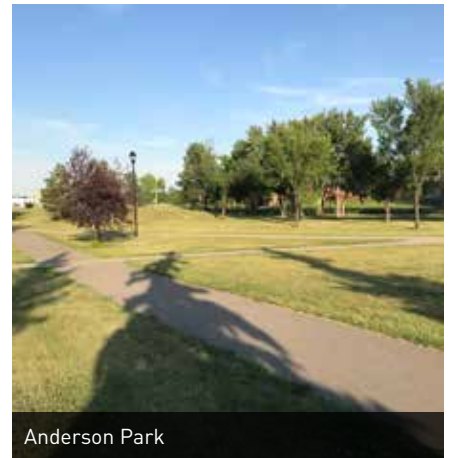
School Fields + Playground



Outdoor Space - Unspecified Use



Southwood Skatepark



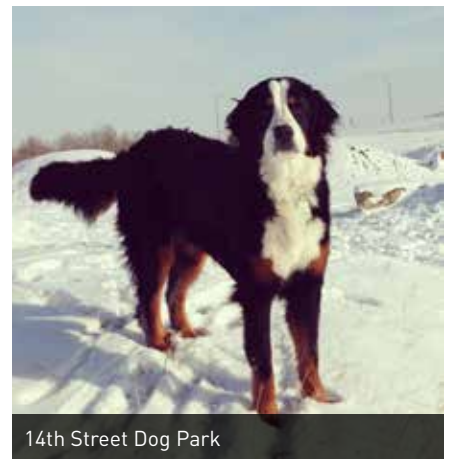
Anderson Park



Southwood Library Community Garden



Playground Requiring Updating



14th Street Dog Park

What's Currently in Southwood?

- 8 climber playgrounds
- 20 school basketball hoops
- 10 slo-pitch fields
- 1 little league baseball field
- 10 sets of posts for football
- 1 line-marked football pitch
- 1 city-run skateboard park
- 2 boards + 2 casual skating rinks
- 2 off-leash dog parks
- 2 community gardens

Existing Shared Spaces

Many of the community's shared spaces are aging and require attention in order to keep them safe, functional, and relevant. Southwood Community Hall has groups of long-term renters such as the Air Cadets and the Learning Tree Preschool; however, the building is not accessible and cannot host those with reduced / limited mobility. Southwood boasts a large amount of park space, most of which residents identified as being underutilized. The Community Gardens at the library and community hall are very popular with residents.



Mural by Kalum Teke Dan, Beltline



Mural by Nasarimba, Tuxedo Park



Waste + Recycling Bins, East Village



Secure Bike Racks, East Village



Community Identity + Wayfinding Signage



Outdoor Furniture, Vancouver



Active Learning Playground, Confederation Park, Mount Pleasant

Encouraged Shared Spaces

The community would like to see our playgrounds updated to be more durable, environmentally-friendly, and inclusive for those with limited mobility. New and existing shared spaces require modern public furniture, well-designed bike racks, and waste / recycling / compost bins to keep these spaces comfortable and clean and to encourage users to extend their stay. Residents commented that shared spaces should be aesthetically pleasing with public art and signage to provide landmarks and create wayfinding.

What's Missing in Southwood?

- Upgrades to playgrounds
- Exercise equipment
- Outdoor seating, tables
- Public Art
- "Southwood" welcome sign
- Food trucks
- Public events



Rhubarb Fest, Southwood



Winterfest, Southwood



Night Market, Inglewood



Halloween Howler, Southwood



Indoor Events Space, Festival Hall, Inglewood



Outdoor Events Space, CSpace, South Calgary

What's Currently in Southwood?

- *Winterfest*
Annually, First Saturday of January
- *Membership Drive*
Annually, Month of March
- *Rhubarb Fest*
Annually, First Saturday of June
- *Halloween Howler*
Annually, October 31

Events

Numerous events are hosted through the Community Association each year. From Winterfest to the ever popular Rhubarb Fest, residents have said they would like to see these events continue and flourish and would like to see more programs for children as well as seniors added. The Community Association encourages these; however volunteers are needed and welcome to help organize and run these programs. Improvements to the Community Hall and the addition of dedicated multi-functional event spaces would help increase neighbour-to-neighbour interactions and attract others from outside the area.



Ethel M Johnson School, Southwood

ACHIEVING OUR VISION

In order to ensure that an idea becomes a reality, residents of Southwood need to work with the City of Calgary, developers, and their neighbours. The following outlines the goals and the timelines in which these ideas can be achieved, as well as who can make them possible.

Short Term (0-3 Years)

- Create, build, and erect a community sign (Residents / City of Calgary)
- Provide wayfinding (Residents / City of Calgary)
- Increase community programs at the Community Hall (Residents)
- Improve playgrounds (Residents / City of Calgary / Developers)
- Adopt-a-planter along Elbow Drive (Residents)

Mid Term (3-6 Years)

- Improvements to curb cuts, sidewalks, and intersections (City of Calgary)
- Increase density near the LRT stations and introduce mixed-use developments (Developers)
- Community Programming (Residents)
- Provide Barrier-Free Access to Community Hall (Residents / City of Calgary)
- Pedestrian Bridge at Anderson LRT Station (City of Calgary)

Long Term (6+ Years)

- Fulfilling the vision and goals for the Anderson Area Redevelopment Plan (City of Calgary / Developers)
- Community programming (Residents)
- Re-examine the Community Vision (Residents)

Funding a Vision

The following outlines several types of funding that are available to Southwood through an application process:

Alberta Lottery Fund - Community Initiatives Program

- Looks for initiatives that strengthen capacity of organizations, and support community-driven goals for public benefit.
- Up to \$75,000 in funding is available

Community Standards Fund

- Dedicated to projects that help keep our communities safe and clean

Calgary Foundation

- Grants to support creative resident-led initiatives that strengthen communities
- Neighbour Grants program offers up to \$5000
- Stepping Stones program provides grants ranging from \$100-600.

Friends of the Federation of Calgary Communities - Community Grant

- A charity able to administer grants to local community organizations

Parks Foundation - Building Communities Grant

- Large grants going towards community-led park projects that help to encourage inclusion and a healthy lifestyle.

First Edition, 2018

*This advisory document was prepared by
Southwood Community Association
with assistance from the
Federation of Calgary Communities.*

*Special thanks to the Southwood residents who
completed the survey or participated in the workshops.*

Cover Image: © Google Earth (Landsat / Copernicus)